



Subscribe to National Geographic Magazine



- HOME
- ANIMALS
- DAILY NEWS
- ENVIRONMENT
- GAMES
- GREEN GUIDE
- HISTORY
- KIDS
- MAPS
- MUSIC
- PHOTOGRAPHY
- SCIENCE & SPACE
- TRAVEL & CULTURES
- VIDEO

- NATIONAL GEOGRAPHIC MAGAZINE
- NATIONAL GEOGRAPHIC CHANNEL
- MAGAZINES
- SHOP
- SUBSCRIPTIONS
- TV & FILM
- TRAVEL WITH US
- OUR MISSION



- Books & Atlases
- Clothing & Accessories
- DVDs
- Maps
- Catalog Quick Shop

Sign up for free Newsletters

Once a month get new photos and expert tips.

NATGEO NEWS WATCH

NEWS EDITOR DAVID BRAUN'S EYE ON THE WORLD

Madagascar's rosewood trees in danger of extinction, study finds

Posted on May 27, 2010 | 0 Comments

Tags: [Africa](#) [biodiversity](#) [endangered species](#) [extinction](#) [forests](#) [Madagascar trees](#)

Categories: [Cultures](#) [Environment](#) [Geography](#)

Political and social chaos and a lack of international protections have put several species of rosewood trees in Madagascar in danger of becoming extinct from illegal logging, according to a policy forum paper in the latest issue of *Science*.

"Forty-seven of Madagascar's 48 species of rosewood (*Dalbergia*) are found nowhere else in the world," said [Duke University](#) graduate student Meredith Barrett, the lead author on the May 27 article.

"Madagascar's military-backed change in leadership last year and a lucrative rosewood market based largely in China have created a dangerous situation for the endangered trees and the habitat that surrounds them," Barrett said. [[Lemurs, Rare Forests Threatened by Madagascar Strife.](#)]

Researchers performed a sophisticated mapping and modeling study with the help of a French botanist to estimate historical and current distributions of the reddish hardwood, and to support their call for greater protections and enforcement, Duke said in a news statement about the research.

"Barrett, whose dissertation research concerns the effects of human development on lemur health, has seen the illegal logging first-hand," Duke explained.



Image of Madagascar courtesy of NASA

"When we went there in October, it had become obvious that Madagascar's tourism had collapsed and that unrestricted logging was accelerating," Barrett said. "The market for lemur 'bush meat' also has increased dramatically, particularly in the country's northeastern rainforests."

Barrett and Duke Lemur Center director Anne Yoder, who is the senior author on the policy paper, hope they can call the international attention of scientists and conservation groups to protect the rosewood trees, Duke added.

"Ideally, this would take the form of increased public pressure on the Malagasy government to step up enforcement and a formal listing under the Convention of International Trade in Endangered Species of Wild Fauna and Flora (CITES)," Barrett said.

Brazilian rosewood gained CITES protection in 1992, which is believed to have put more pressure on the forests in Madagascar.

Most Popular Entries

1,800,000 visitors to Nat Geo News Watch were most interested in:

- Seven of the biggest beasts of all time
- Terrifying sea beast hauled up
- Giant spider found in Israel desert
- Dark secrets of the Devil's Bible
- Why do we sleep? Scientists don't know for sure
- "Watermelon" tapir, like a pig with a trunk (photo)
- Fish with human-like teeth (photo)
- Croc-grabbing, snake-wrestling Brady Barr talks about his work (photo of giant salamander)
- The very last "uncontacted tribes" (photos)
- One in two primates headed for oblivion (photos)



David Braun's NatGeo News Watch on Facebook



David Braun's NatGeo News Watch



Will you help EARTH plant Earth's future?

On World Environment Day--June 5, 2010-- EARTH University and its global network of alumni and supporters will plant hundreds of thousands of trees in 26 countries as part of its 20th anniversary commemoration...

May 28 at 2:33pm

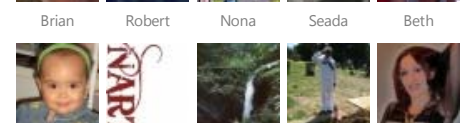
David Braun's NatGeo News Watch



Love potions threaten survival of lorises

Lorises--small nocturnal

David Braun's NatGeo News Watch has 5,174 fans



David Braun's NatGeo News Watch on Facebook

About This Blog

The slow-growing rosewood trees are found in relative isolation from each other, Duke said. "The way our dense forest floats very well, so loggers will fall several trees along river banks to make skids and rafts for bringing the logs to market. Once the logs are floated and trucked to Malagasy ports, they are loaded onto container ships and hauled to China to make highly prized furniture and musical instruments."

"There are an estimated 10,000 to 15,000 metric tons of felled rosewood trees awaiting shipment from Madagascar's ports."

The Malagasy logger who fells the tree is paid about 50 cents for backbreaking work, Barrett said. A Chinese rosewood armoire retails for about U.S.\$20,000.

Enforcement of the Malagasy government's on-again, off-again policy against rosewood logging is pretty much nonexistent, Barrett said. [Conservationists applaud renewed ban on Madagascar rosewood]. Logging interests have threatened the safety of villages and at least one park office has been burned down.

"If you protect the trees, you're also protecting habitat," Barrett said. "Seventy percent of Madagascar's species live in these forests."

Related blog posts:

[Madagascar's logging crisis: Separating myth from fact](#)

[Lemurs, Rare Forests Threatened by Madagascar Strife](#)

[Conservationists Call on Malagasy People to Stop Forest Plunder](#)

[Act Aggressively to Curb Illegal Logging, Madagascar Urged](#)

[The call to boycott Madagascar's rosewood and ebony explained](#)

[U.S. House condemns illegal logging, decimation of wildlife in Madagascar](#)

[Conservationists applaud renewed ban on Madagascar rosewood](#)

Add a Comment

Your Username

[Sign in](#) to comment on this entry.

Your Comment

I accept the Community at National Geographic [terms of service](#).

Submit

Nat Geo News Watch gives you a front-row seat on the issues and solutions at the intersection of the needs of people and the earth's capacity to provide. There are occasional behind-the-scenes details about life in the field, and, through the topics we select to blog about, insights into what's changing in our world, why, and what we can do about it.

[Meet Our Bloggers. Join the Discussion!](#)

Subscribe to This Blog

Get the RSS feed for this blog—and don't miss a single word.

RSS [What is RSS?](#)

Top Tags

aardvarks [Afghanistan](#) [Africa](#) [Alaska](#) [Albania](#) [albatrosses](#) [Alex Trebek](#) [algae](#) [Algeria](#) [Allen Carroll](#) [alligators](#) [amphibians](#) [Anne Minard](#) [anoles](#) [Antarctic](#) [anteaters](#) [ants](#) [archaeology](#) [Arctic](#) [Argentina](#) [Armenia](#) [Asia](#) [atmosphere](#) [Australia](#) [babirusas](#) [baboons](#) [Bahamas](#) [Bangladesh](#) [bats](#) [bears](#) [beavers](#) [bees](#) [beetles](#) [Belize](#) [Benin](#) [Benjamin Shaw](#) [Bhutan](#) [bioblitz](#) [biodiversity](#) [birds](#) [bison](#) [Bolivia](#) [bonobos](#) [Bookshelf](#) [botany](#) [Botswana](#) [Boyd Matson](#) [Brazil](#) [Bulgaria](#) [Burkina Faso](#) [butterflies](#) [Cambodia](#) [Cameroon](#) [Canada](#) [Caribbean](#) [caribou](#) [Caroline Braun](#) [cats](#) [cattle](#) [caves](#) [Chad](#) [Challenger Deep](#) [chameleons](#) [cheetahs](#) [Chile](#) [chimpanzees](#) [China](#) [Chris Combs](#) [chytrid](#) [Cleopatra](#) [climate](#) [Clinton](#) [Clovis](#) [cockroaches](#) [Colombia](#) [Congo](#) [conservation](#) [coral](#) [corals](#) [Costa Rica](#) [Cote d'Ivoire](#) [cows](#) [crabs](#) [crocodiles](#) [crustaceans](#) [culpeos](#) [cultural biodiversity](#) [dams](#) [Daniel Grossman](#) [Denmark](#) [deserts](#) [dinosaurs](#) [dogs](#) [dolphins](#) [Dominican Republic](#) [dragonflies](#) [eagles](#) [Earth Day](#) [Earth from Space](#) [earthquakes](#) [Ecuador](#) [Egypt](#) [elephants](#) [Emerging Explorers](#) [endangered species](#) [energy](#) [Eric Sala](#) [environment](#) [Ethiopia](#) [Europe](#) [evolution](#) [exhibition](#) [exploration](#) [extinction](#) [Fiji](#) [Finland](#) [fish](#) [flies](#) [food](#) [Ford Cochran](#) [forests](#) [fossils](#) [foxes](#) [France](#) [French Polynesia](#) [freshwater](#) [frogs](#) [fungi](#) [Gabon](#) [Galapagos](#) [geckos](#) [Geographic Bee](#) [geography](#) [Germany](#) [Ghana](#) [giant squid](#) [gibbons](#) [giraffes](#) [Global Action Atlas](#) [gorillas](#) [grasslands](#) [Greece](#) [Greenland](#) [groundhogs](#) [Guam](#) [guanacos](#) [Guatemala](#) [Guinea](#) [worm](#) [Haiti](#) [Hans-Dieter Sues](#) [Hawaii](#) [hippos](#) [HIV/AIDS](#) [horses](#) [Hubbard Medal](#) [Hubble Telescope](#) [human body](#) [human origins](#) [hyenas](#) [Iceland](#) [iguanas](#) [India](#) [Indonesia](#) [insects](#) [intelligence](#) [invasive](#)

Recent Posts

- Love potions threaten survival of lorises
- Madagascar's rosewood trees in danger of extinction, study finds
- Termites rule Africa's savanna, satellite data show
- Norway gives Indonesia US\$1 billion to help reduce

NEWS EDITOR DAVID BRAUN'S EYE ON THE WORLD

- Time to reexamine offshore drilling in the Arctic
- Human actions cause extinction of Madagascar bird
- They're playing our song--Gospel-style
- Why the ultimate frequent flyer--the American knot--is endangered
- Cultures,
- Environment,
- Geography

Give to NGS | Contact Us | Newsletters | Jobs | Press Room | Site Index | Customer Service | Advertise With Us | Global Sites | Terms of Service | Privacy Policy

National Geographic News Feed

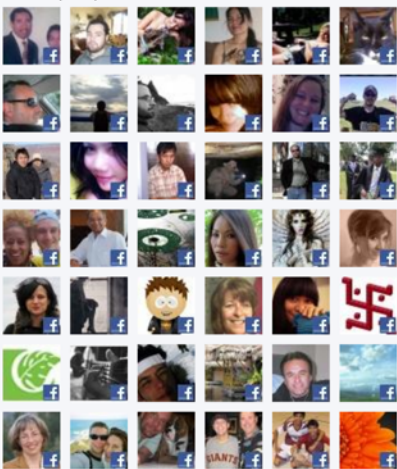
- Electric Ash Found in Iceland Plume Miles From Volcano
- Hurricane Season May Be "Extremely Active"
- Oil Spill Poses Risk to Gulf Power Plants
- Presented By:
- Space Photos This Week: Space Shuttle, Supernova, More

Blogroll

- BlogWILD (Ford Cochran)
- Brand South Africa Blog
- Breaking Orbit (Victoria Jaggard)
- Dot Earth (Andrew Revkin)
- The Green Guide (Green Guide blog)
- Intelligent Travel
- The Pimm Group
- Signs From Earth (Dennis Dimick)
- Wildlife Direct (Saving Endangered Animals)



Followers (554)



Follow this blog